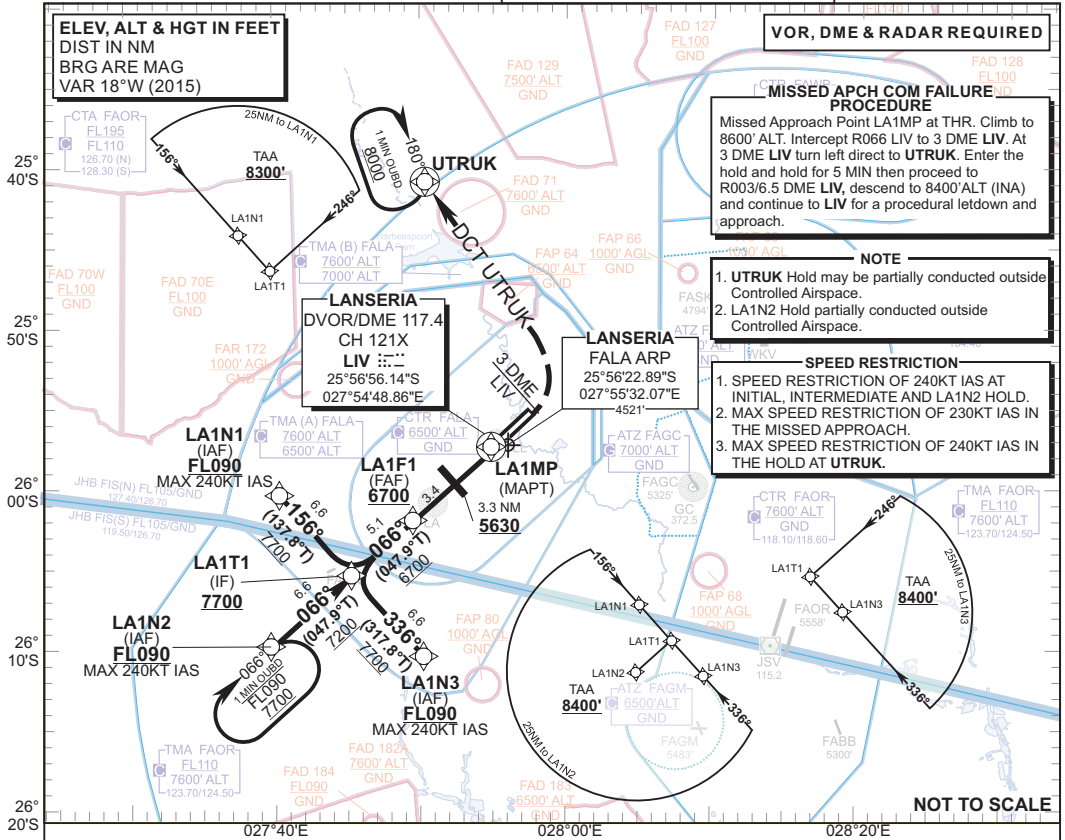


INSTRUMENT AERODROME ELEV 4521' APPROACH CHART

HEIGHTS RELATED TO
THR RWY 07 - ELEV 4521'

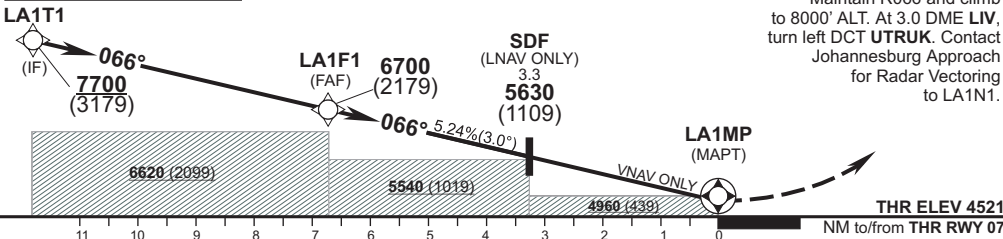
FALA APN: 122.85 JOHANNESBURG APP S: 124.50
SMC: 121.65 E: 124.50
TWR: 124.00 W: 123.70
ATIS: 127.65 SMC: 121.90

LANSERIA INTL
RNAV(GNSS) RWY 07
CAT A - D



| | | | | | | | |
|---------------------------|-------------|-------------|-------------|-------------|-------------|------------|------------|
| DIST (NM) to LA1MP | 6.7 | 6 | 5 | 4 | 3 | 2 | 1 |
| ADVISORY ALT (HGT) | 6700 (2179) | 6490 (1969) | 6170 (1649) | 5850 (1329) | 5530 (1009) | 5210 (689) | 4890 (369) |

**TRANSITION ALT 8000
TRANSITION LEVEL ATC**



MISSED APPROACH:
Maintain R066 and climb to 8000' ALT. At 3.0 DME LIV, turn left DCT UTRUK. Contact Johannesburg Approach for Radar Vectoring to LA1N1.

CHANGE: MOC Profile view
Straight-in Approach

| | | | | | | | | | | | | | |
|-----------------|-------------------------------|-----------------------|-------------|----------|-------------|----------|--|------------|-------------|-------------|-------------|-------------|-------------|
| | | MIN TEMP: -5°C | A | B | C | D | GS | KT | 80 | 100 | 120 | 140 | 160 |
| LNNAV/VNAV | | 2.5%OCA(H) | 5600 (1079) | | | | LA1F1 to LA1MP | M:S | 5:02 | 4:01 | 3:21 | 2:52 | 2:31 |
| | | 5.0%OCA(H) | 4860 (339) | | | | Rate of descent | FPM | 425 | 531 | 637 | 743 | 849 |
| LNNAV ONLY | With SDF | 2.5%OCA(H) | 5836 (1315) | | | | NOTE: | | | | | | |
| | | 4.8%OCA(H) | 5224 (703) | | | | 1. No turn before MAPT. 2. ACFT on Missed Approach to maintain listening watch on 125.8 MHZ. 3. CAT D Circling Prohibited. | | | | | | |
| | | RVR | 1500m | | 2000m | | | | | | | | |
| | | ALS OUT | 1500m | | 2000m | | | | | | | | |
| Circling | Entirely at Pilots discretion | | 5320 (799) | | 5930 (1409) | | PROHIBITED | | | | | | |